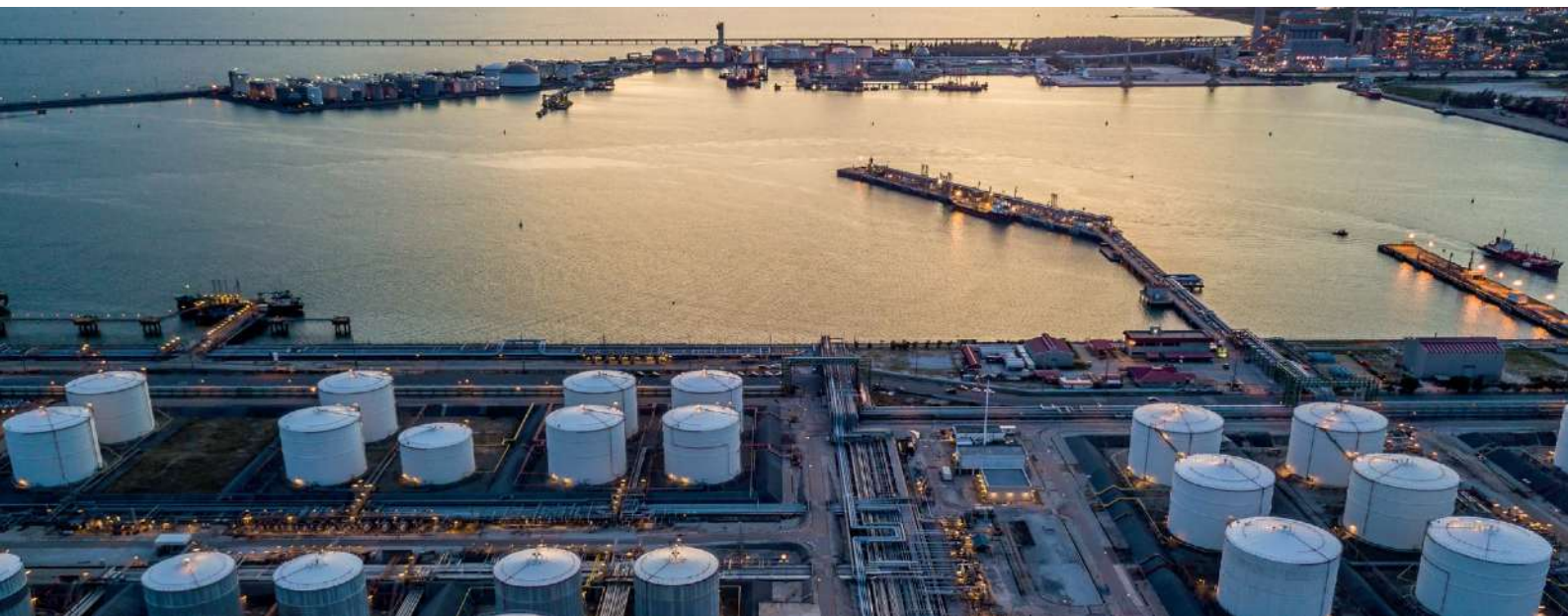


AQUA SENTRY



Product
Technical
Specifications



sales@darcy.co.uk

0800 0370 899

Working today for a cleaner tomorrow.

AQUA
SENTRY | A division of
the Darcy Group
darcy

AQUA SENTRY

Aquasentry, part of the Darcy Group, manufacture and supply an exclusive range of liquid monitoring and detection systems that provide affordable solutions to comply with regulations and EA guidelines, minimise waste management costs and prevent pollution of the watercourse.

Our range of remote monitoring automated systems, provide full site environmental security, ensuring that no pollutants leave your site and ensure your company maintains the highest storage and containment standards.

Our liquid monitoring systems are in use across the globe with sales to OEMs, distributors and end user companies alike.

All of our systems can be activated automatically and provide full notification via text, email, beacon or sounder making you aware of a potential pollution incident across the most remote parts of your site. Full reporting logs and diagnostic checks are available at the touch of a button detailing "current status" of pollution prevention systems and service requests. In addition to a range of "off the shelf" products, from our own manufacturing plant we are able to produce bespoke alarm control systems to suit your individual requirements.



sales@darcy.co.uk

0800 0370 899

Working today for a cleaner tomorrow.

**AQUA
SENTRY** | A division of
the Darcy Group
darcy



Hydraulic Check Valve

Product Summary

The Hydraulic Check Valve™ is a hydraulically activated drain closure system which contains pollutants, oil spills and firewater run off issues on site within seconds of an incident and contains until such time as a release is authorised. The system comprises a control panel and drain closure valve.

The control panel is capable of multiple activations and is operated via battery power (with mains trickle charge). This ensures that the system operates even in the event of a power failure. The system contains a 24v Siemens PLC as its method of control. A pressure sensor is incorporated to stop the hydraulic pump at a pre set level to ensure a tight seal. The unit can be activated manually at the control panel or connected to a number of detection devices such as sounder alarms for fire, GSM alarms for text or directly to the latest web interfaced interceptor monitor for automatic activation.

The Hydraulic Check Valve™ is operated by hydraulics and opens into the chamber. This provides addition sealing when the unit is activated due to the water build up within the drainage system. The double acting ram enables the valve to open up against the head of water and can be manipulated to control the amount at which the valve opens to release the water build up in stages to avoid further erosion challenges downstream.

Feature

- Battery operated
- Mains trickle charge
- Repeated use
- Controlled operation
- Hydraulic activation
- Programme logic controlled panel
- Pressure sensor

Specifications

- 6" to 72" diameter drains
- Manufactured from 10mm stainless steel
- Two half-moon design
- Centralised steel bar
- Hydraulic locking mechanism
- Positional lock indicators
- Secondary stop lock.



Designed to comply with CIRIA 736



sales@darcy.co.uk

0800 0370 899



Product Summary

Draintector™ drain isolation system rapidly seals drains, stopping pollution of the watercourse at the flick of a switch.

With simple, low-cost installation requiring no major civil works, Draintector™ is far more cost effective than mechanical gate and penstock valves and is installed in a fraction of the time with minimal disruption to business operation.

Draintector™ can be used as a preventative measure to seal drains at time of high risk including deliveries and during site maintenance. It can also be used in an emergency situation, in the event of a spill or fire, to rapidly block the drain preventing hazardous liquids and firewater runoff entering controlled waters.

The system comprises a control panel located above ground that operates a closure system installed within the site drain system without affecting the flow in normal conditions.

Features

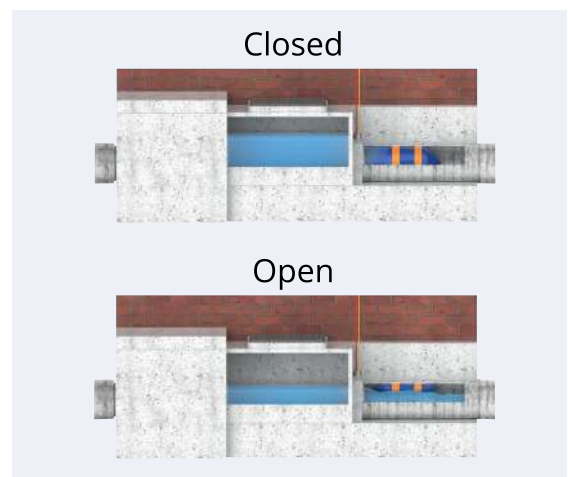
- Manual or automated activation
- Compressor and valve arrangement
- Programmable logic module
- Pressure monitor Automated test procedure
- Mains power with battery backup
- IP45 rated GRP lockable cabinet
- HMI testing screen
- Designed to comply with CIRIA 736

Benefits

- Isolated part or the whole site
- Contains spillages or firewater on site
- Single day installation • No civil works required
- Minimal disruption to site activity
- Self-diagnostic check
- Full reporting of activations
- Simple operation
- Rapid activation



Designed to comply with CIRIA 736



sales@darcy.co.uk

0800 0370 899



Product Summary

Ideal for new build sites or where mains supply is readily and easily available, making installation efficient and cost effective. This unit has an audible alarm and a liquid crystal display and is operated by means of a simple push switch. An output relay is provided which allows the use of an external sounder or beacon and can also be connected to your building management system (BMS).

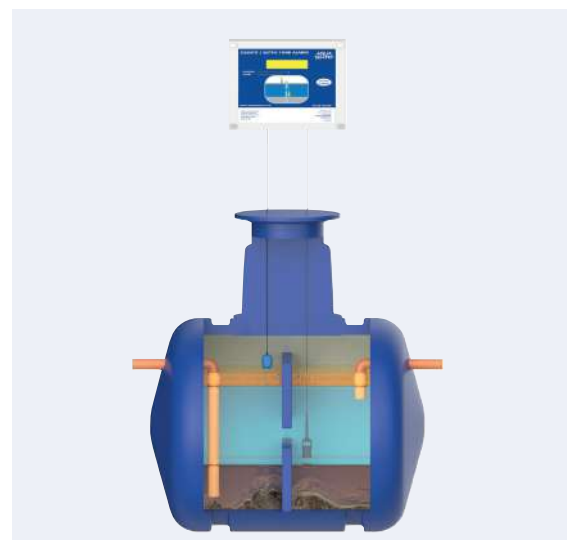
Alarm warnings allow you time to take corrective action ensuring the safe and economic operation of separators preventing oil passing through the separator and polluting watercourses which may result in expensive fines and clean up costs. Darcy can tailor your Separator Alarm to your requirements by displaying your name and contact details on the liquid crystal display and fitting your custom label (please ask for details).

Benefits

- This unit has an audible alarm and a liquid crystal display and is operated by means of a simple Push Switch.
- An output relay is provided which allows the use of an external sounder or beacon and can also be connected to your building management system (BMS).

Specifications

- Mains Powered: 230VAC
- IP65 ABS Enclosure: 180 x 180 x 60mm
- Output: Clean Contact Relay
- Display: Liquid Crystal
- Alarm: Audible (local)
- Probe Range: 200 meters max. (Dependent on cable style)
- Probe Type: High Liquid Float Probe
- ATEX Approved: Ex II (1) G [Ex ia Ga] IIC (-20°C ≤ Ta ≤ +50°C)



sales@darcy.co.uk 0800 0370 899



Bund Water Control Unit

Product Summary

The Bund Water Control Unit is a low maintenance automatic pumping system that constantly monitors the contents of the bund, detects the difference between oil and water and safely pumps the water (rainwater containing less than 5mg of oil per litre) only out of the bund into the surface water drainage system. Only the retained oil then needs to be removed from the sump, significantly reducing the number of visits by waste management companies thus providing significant cost savings, paying for itself in the first year.

Features

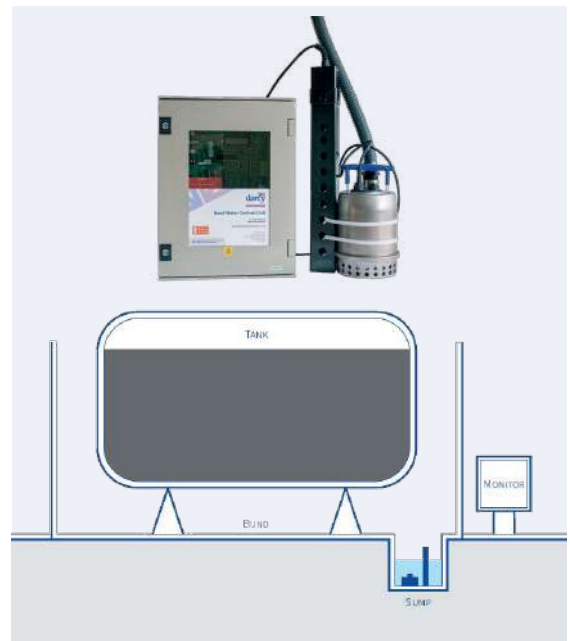
The control unit continuously monitors the condition of the connected probe assembly and the pump is operated when water is detected. The current status is displayed on the display located on the front of the unit. If an alarm condition is detected, a warning message is displayed, e.g. failsafe probe activated. The unit then gives the option to accept/acknowledge the alarm. Operation will then return to normal providing the fault that caused the alarm has been corrected.

Specifications

- Power Source: 230v Mains Powered
- Standard Pump Rate: 165 l/m @ 1.5m Head
- Standard Pump Lead: 5m
- Control Panel Dimensions: 432 x 328 x 200mm
- Pump / Probe Dimensions: 525 x 200 x 250mm

Standard Kit comprises:

- 1 Control Panel (230v)
- 1 Pump and Probe Set
- 5m Discharge Hose (25mm Outer Diameter)
- 1 Anti-Syphon Device



sales@darcy.co.uk

0800 0370 899



Product Technical Specification

Grease Separator Alarm



Product Summary

Ideal for new build sites or where mains supply is readily and easily available, making installation efficient and cost effective. This unit has an audible alarm and a liquid crystal display and is operated by means of a simple push switch. An output relay is provided which allows the use of an external sounder or beacon and can also be connected to your building management system (BMS).

Alarm warnings allow you time to take corrective action ensuring the safe and economic operation of separators preventing grease passing through the separator and polluting watercourses which may result in expensive fines and clean up costs. Darcy can tailor your Separator Alarm to your requirements by displaying your name and contact details on the liquid crystal display and fitting your custom label (please ask for details).

Benefits

The alarm system and sensors guarantee an increased level of safety and requires simple installation for bespoke monitoring of grease separators.

- Warn of excessive levels of grease
- Tells you when separator needs emptying
- Reduces waste management costs
- 24/7 monitoring with LCD and beacon alarm
- Designed to comply with EN1825-1:2004
- Can be fitted to interceptors from all manufacturers
- Reduces interceptor servicing costs
- Ensures safe and economic operation of interceptors

Specifications

- Mains Powered: 230VAC
- IP65 ABS Enclosure: 180 x 180 x 60mm
- Output: Clean Contact Relay
- Display: Liquid Crystal
- Alarm: Audible (local)
- Probe Range: 200 metres max. (Dependent on cable style)
- Atex approved: Baseefa 08ATEX0110/1
- Specific Marking of Explosion Protection: Ex II (1) G [Ex ia Ga] IIC (-20°C ≤ Ta ≤ +50°C)
- Compatible probe types:
- High Grease: capacitance, conductivity or specific gravity GREASE



sales@darcy.co.uk

0800 0370 899

Working today for a cleaner tomorrow.



A division of
the Darcy Group



High Level Alarm

Product Summary

Ideal for new build sites or where mains supply is readily and easily available making installation efficient and cost effective. Alarm warnings allow you time to take corrective action ensuring the safe and economic operation of tanks preventing overflow and pollution of watercourses which may result in expensive fines and clean up costs.

Features

This unit has an audible alarm and a liquid crystal display and is operated by means of a simple Push Switch. An output relay is provided which allows the use of an external sounder or beacon and can also be connected to your building management system HIGH

Specifications

- Mains Powered: 230VAC
- Input: 1 x probe
- Operating Temperature: -20°C to +50°C
- Enclosure size: 100mm x 100mm x 80mm
- Designed to comply with EN1825



sales@darcy.co.uk 0800 0370 899



Oil Separator Alarm

Product Summary

Ideal for new build sites or where mains supply is readily and easily available, making installation efficient and cost effective. This unit has an audible alarm and a liquid crystal display and is operated by means of a simple push switch. An output relay is provided which allows the use of an external sounder or beacon and can also be connected to your building management system (BMS). Alarm warnings allow you time to take corrective action ensuring the safe and economic operation of separators preventing oil passing through the separator and polluting watercourses which may result in expensive fines and clean up costs. Darcy can tailor your Separator Alarm to your requirements by displaying your name and contact details on the liquid crystal display and fitting your custom label (please ask for details).

Specifications

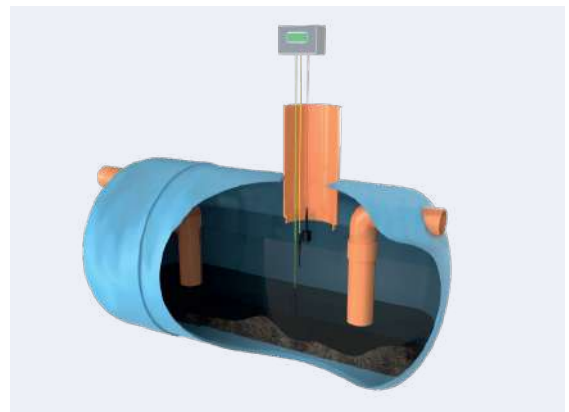
Mains Powered: 230VAC

- IP65 ABS Enclosure: 180 x 180 x 60mm
- Output: Clean Contact Relay
- Display: Liquid Crystal
- Alarm: Audible (local)
- Probe Range: 200 metres max.
(Dependent on cable style)
- Atex approved: Baseefa 08ATEX0110/1
- Specific Marking of Explosion Protection:
Ex II (1) G [Ex ia Ga] IIC (-20°C ≤ Ta ≤ +50°C)
- Compatible probe types:
 - High Oil: conductivity or specific gravity
 - High Liquid: optical or float switch
 - Silt: optical

Benefits

The alarm system and sensors guarantee an increased level of safety and requires simple installation for bespoke monitoring of oil and petrol separators.

- Warn of excessive levels of oil, liquid and silt
- Tells you when separator needs emptying
- Reduces waste management costs
- Designed to comply with EN858-1 and 2
- Can be fitted to interceptors from all manufacturers
- Reduces interceptor servicing costs
- Ensures safe and economic operation of interceptors



sales@darcy.co.uk

0800 0370 899



Product Summary

Ideal for new build sites or where mains supply is readily and easily available, making installation efficient and cost effective. This unit has an audible alarm and a liquid crystal display and is operated by means of a simple push switch. An output relay is provided which allows the use of an external sounder or beacon and can also be connected to your building management system (BMS).

Alarm warnings allow you time to take corrective action ensuring the safe and economic operation of separators preventing oil passing through the separator and polluting watercourses which may result in expensive fines and clean up costs. Darcy can tailor your Separator Alarm to your requirements by displaying your name and contact details on the liquid crystal display and fitting your custom label (please ask for details).

Benefits

The alarm system and sensors guarantee an increased level of safety and requires simple installation for bespoke monitoring of oil and petrol separators.

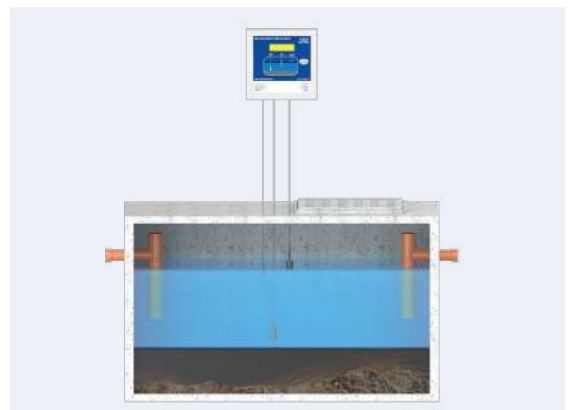
- Warn of excessive levels of oil, liquid and silt
- Tells you when separator needs emptying
- Reduces waste management costs
- Designed to comply with EN858-1 and 2
- Can be fitted to interceptors from all manufacturers
- Reduces interceptor servicing costs
- Ensures safe and economic operation of interceptors

Specifications

- Mains Powered: 230VAC
- IP65 ABS Enclosure: 180 x 180 x 60mm
- Output: Clean Contact Relay • Display: Liquid Crystal
- Alarm: Audible (local)
- Probe Range: 200 metres max. (Dependent on cable style)
- Atex approved: Baseefa 08ATEX0110/1
- Specific Marking of Explosion Protection: Ex II (1) G [Ex ia Ga] IIC (-20°C ≤ Ta ≤ +50°C)

Compatible probe types:

- High Oil: conductivity or specific gravity
- High Liquid: optical or float switch
- Silt: optical



sales@darcy.co.uk

0800 0370 899



Sewage Treatment Alarm

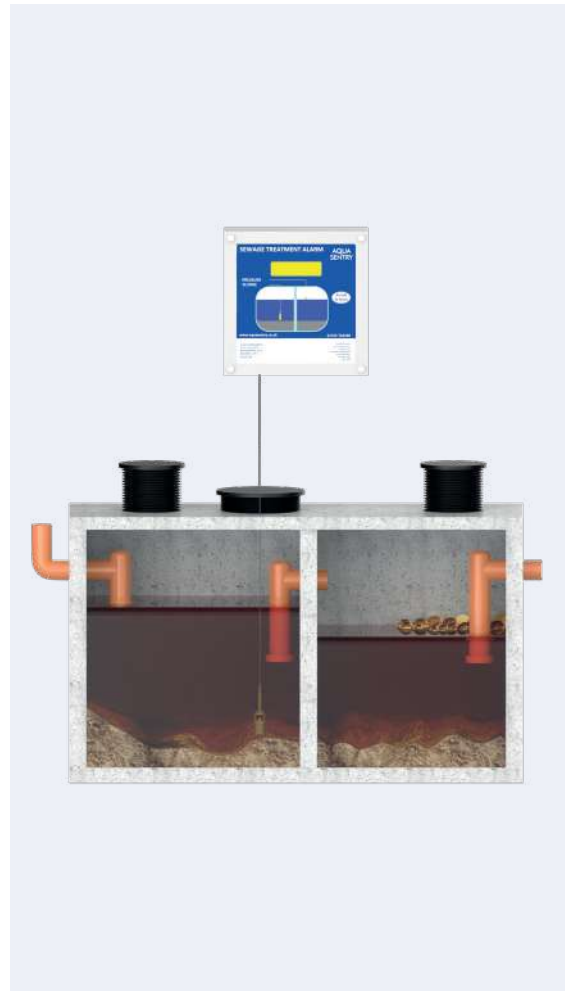
Product Summary

The Aquasentry sewage alarm provides monitoring of sludge within tanks or vessels

- Built-in LED confirms alarm activation
- Easy installation
- Thermoplastic IP65 rated design
- Designed to comply with EN858-1 and 2

Specifications

- Power Source: 230v Mains Powered
- Input: 1 x Probe
- Operating Temperature: -20°C to +50°C
- Enclosure size: 100mm x 100mm x 80mm
- Electrical: Power Supply 85 to 264VAC 50/60 Hz,
- 9 to 36 VDC, Power Rating 0.8A



sales@darcy.co.uk

0800 0370 899

AQUA SENTRY



sales@darcy.co.uk

0800 0370 899

Working today for a cleaner tomorrow.

AQUA
SENTRY | A division of
the Darcy Group
darcy